

Certificate of Analysis

Epitalon 20 mg

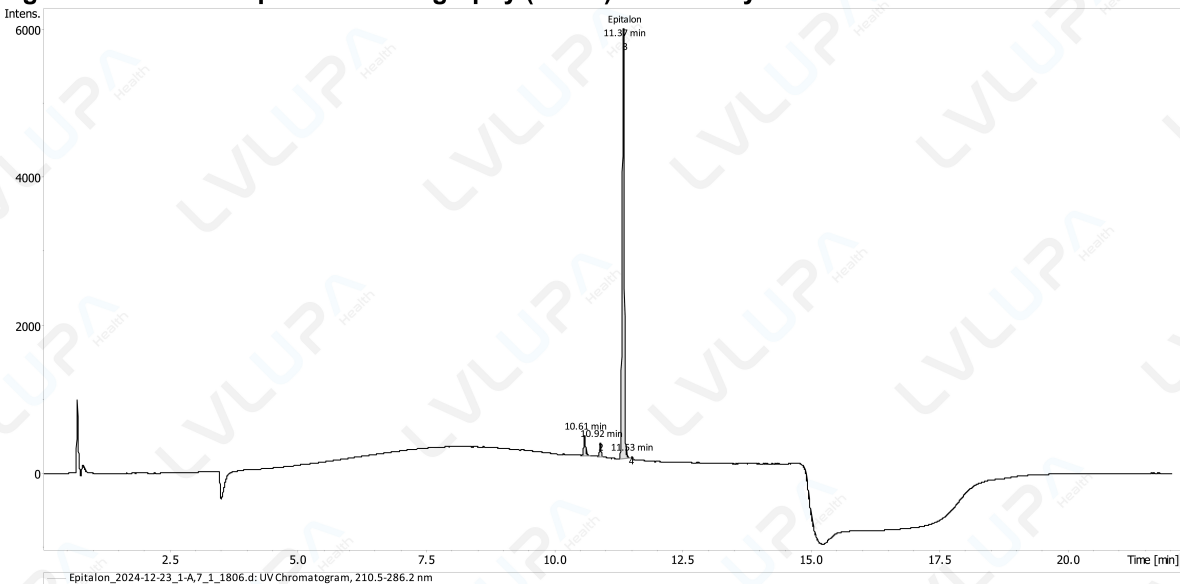
alanyl-glutamyl-aspartyl-glycine

Compound : Epitalon **Client** : LVL UP Health
Lot number : 2024-12-23
Analysis date : 2025-01-07
Purity % : 93.99%
Method : HPLC-UV-MS

PubChem CID: 219042

<https://pubchem.ncbi.nlm.nih.gov/compound/219042>

High Performance Liquid Chromatography (HPLC) UV – Purity Test



PEAK LIST			
Number of detected peaks: 4			
	Time (min)	Area	%Area
1	10.61	6.52E+02	3.63
2	10.92	3.87E+02	2.15
6	11.37	1.69E+04	93.99
+	11.53	4.03E+01	0.22

Epitalon

Analysis Performed by
Ken Pendarvis, ChE
Analytical Chemist
MZ Biolabs
contact@mzbiolabs.com



2025-01-17

Note: Injectable peptides may contain salts and sugars to aid in solubility and act as pH buffers.
These are not normally detected using UV and are not considered impurities.



MZ Biolabs
2102 N Country Club Rd
Tucson, AZ 85716
contact@mzbiolabs.com
www.mzbiolabs.com

Epitalon 20 mg

alanyl-glutamyl-aspartyl-glycine

PubChem CID: 219042

<https://pubchem.ncbi.nlm.nih.gov/compound/219042>

Mass Spectrometry (MS) – Identity Test

Identity confirmed using HPLC-MS

Molecular weight calculated using monoisotopic m/z values from mass spectrum

Expected monoisotopic mass : 390.14 Da

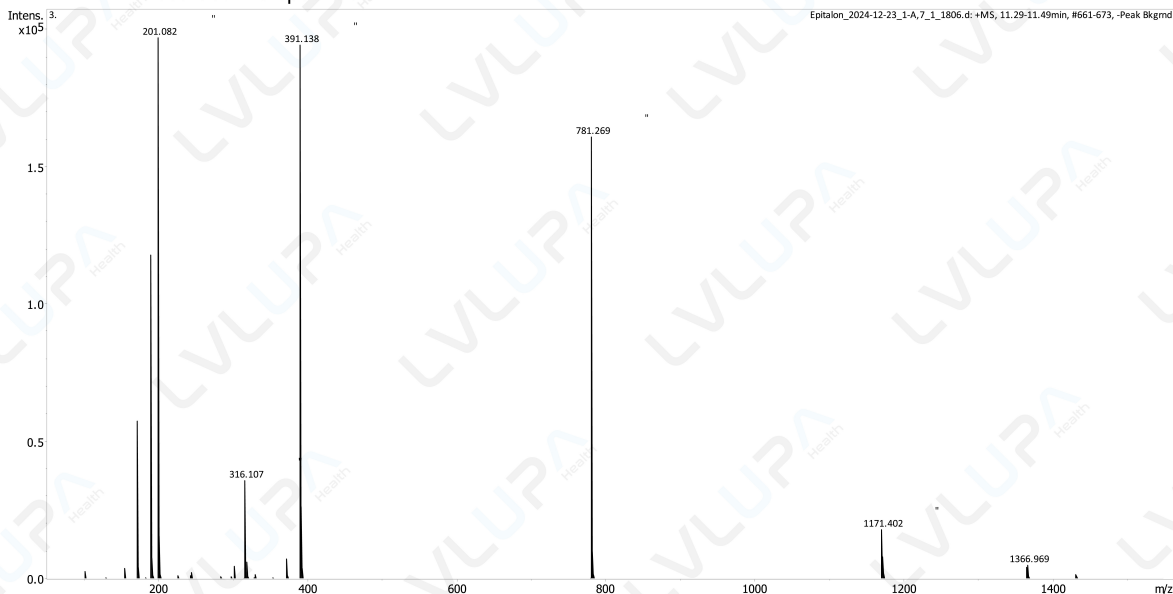
Measured monoisotopic mass : 390.14 Da

Molecular weight confirmed

Note : Monoisotopic m/z values are not easily seen in full spectrum view for larger molecules and peptides.

The dominant isotopic peak (base peak) shown in the spectrum below can be used to approximate the average molecular weight frequently reported by vendors and databases as a secondary means of confirmation.

Recorded MS spectrum



Analysis Performed by
Ken Pendarvis, ChE
Analytical Chemist
MZ Biolabs
contact@mzbiolabs.com

2025-01-17